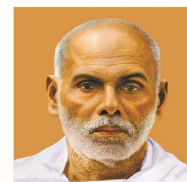


Sree Narayana Guru College of Engineering & Technology

CHALAKKODE P.O., KOROM, PAYYANUR, KANNUR-670 307



Criterion 7.1 - Institutional Values and Social responsibilities

7.1.2 The Institution has Facilities and Initiatives for

- 1. Alternate Sources of Energy and Energy Conservation Measures**
- 2. Management of the various types of Degradable and non-degradable waste**
- 3. Water Conservation**
- 4. Green Campus Initiatives**
- 5. Disabled Friendly Barrier Free Environment.**

Table of Contents

Sl. No.	Contents	Page No.
1	List and Reports of Green Campus Initiatives	1
2	Geo Tagged Photos of Solar Power Plants	9
3	Geo Tagged Photos of Wheeling to the Grid	11
4	Geo Tagged Photos of Use of LED Bulbs/ Power Efficient Equipment	13
5	Geo Tagged Photos of Biogas plant	15
6	Geo Tagged Photos of Incinerator	17
7	Geo Tagged Photos of Solid Waste Management	19
8	Geo Tagged Photos of E-Waste Management	21
9	Geo Tagged Photos of Rain Water Harvesting	23
10	Geo Tagged Photos of Borewell /Open Well Recharge	25
11	Geo Tagged Photos of star A/C and BLDC fan	27
12	Geo Tagged Photos of Disabled Friendly Pathways -Ramps	29
13	Geo Tagged Photos of Disabled Friendly Washroom	31
14	Geo Tagged Photos of Wheelchair	33

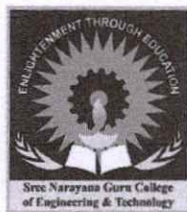


Sree Narayana Guru College of Engineering & Technology

CHALAKKODE P.O., KOROM, PAYYANUR, KANNUR-670 307



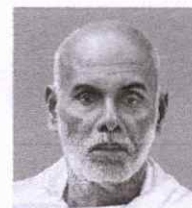
LIST AND REPORTS OF GREEN CAMPUS INITIATIVES



Est. 2003

Sree Narayana Guru College of Engineering & Technology

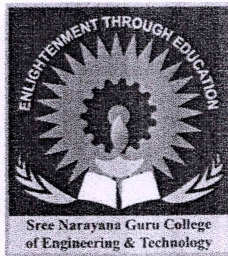
CHALAKKODE P.O., KOROM, PAYYANUR, KANNUR-670 307



LIST OF GREEN CAMPUS INITIATIVES

SL.No	EVENT NAME	DATE
1	Vertical Garden Making	5 th June 2023
2	Paper pen distribution	
3	Planation drive in association with Nature Club	
4	Bottle Booth	

Dr. LEENA A V
PRINCIPAL
SREE NARAYANA GURU COLLEGE OF
ENGINEERING & TECHNOLOGY
PAYYANUR, KANNUR





Est. 2003

Sree Narayana Guru College of Engineering & Technology

KOROM, PAYYANUR, KANNUR-670 307

SREE NARAYANA GURU COLLEGE OF
ENGINEERING & TECHNOLOGY, PAYYANUR
Korom, Chalakkode P. O, Payyanur, Kannur -670307
Managed by Sree Bhakthi Samvardhini Yogam, Talap, Kannur
Affiliated to APJ Abdul Kalam Technological University and Approved by AICTE



NATIONAL SERVICE SCHEME
UNIT NO : 610

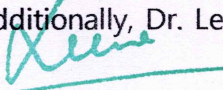
June 5

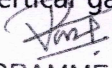
**WORLD
ENVIRONMENT
DAY**

Events
☒ Vertical Garden Making
☒ Paper Pen Distribution
☒ Plantation Drive in Association
with Nature Club

f @ nss_sngcet

The NSS Unit of SNGCET, in collaboration with the Nature Club of SNGCET, organized a World Environment Day celebration at the college on June 5, 2023. The event was formally inaugurated by Sri. Rajeevan M, Assistant of Social Forestry in the Kannur division. Inside our campus, Sri T K Rajaendran, Vice President of SBSY Talap, inaugurated the paper pen distribution challenge, following which paper pens were distributed to all college staff. Additionally, Dr. Leena A V, the college principal, formally inaugurated the vertical garden


Dr. LEENA A. V.
PRINCIPAL
SREE NARAYANA GURU COLLEGE OF
ENGINEERING & TECHNOLOGY, PAYYANUR
KANNUR


PROGRAMME OFFICER
NATIONAL SERVICE SCHEME
UNIT No. 610
SREE NARAYANA GURU COLLEGE
OF ENGINEERING & TECHNOLOGY,
PAYYANUR

created on our campus using recycled plastic bottles. As part of the collaboration with the Nature Club, NSS volunteers planted numerous saplings across our campus.

**SREE NARAYANA GURU COLLEGE OF
ENGINEERING & TECHNOLOGY, PAYYANUR**

Korom, Chalakkode P. O, Payyanur, Kannur -670307
Managed by Sree Bhakthi Samvardhini Yogam, Talap, Kannur
Affiliated to APJ Abdul Kalam Technological University and Approved by AICTE



NATIONAL SERVICE SCHEME

UNIT NO : 610

PAPER PEN DISTRIBUTION



@ nss_sngcet

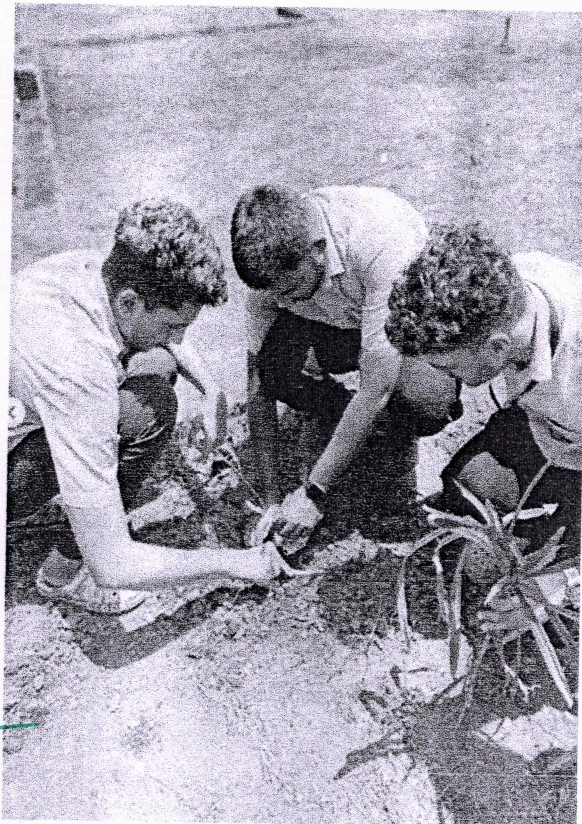
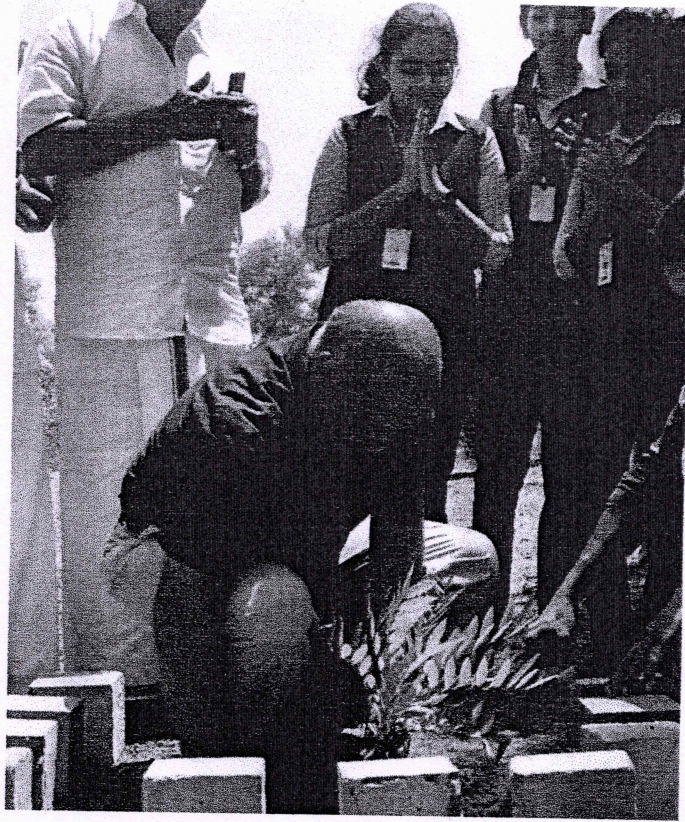
Leena

**Dr. LEENA A. V.
PRINCIPAL**

SREE NARAYANA GURU COLLEGE OF
ENGINEERING & TECHNOLOGY, PAYYANUR
KANNUR

Post

PROGRAMME OFFICER
NATIONAL SERVICE SCHEME
UNIT No 610
SREE NARAYANA GURU COLLEGE
OF ENGINEERING & TECHNOLOGY,
PAYYANUR



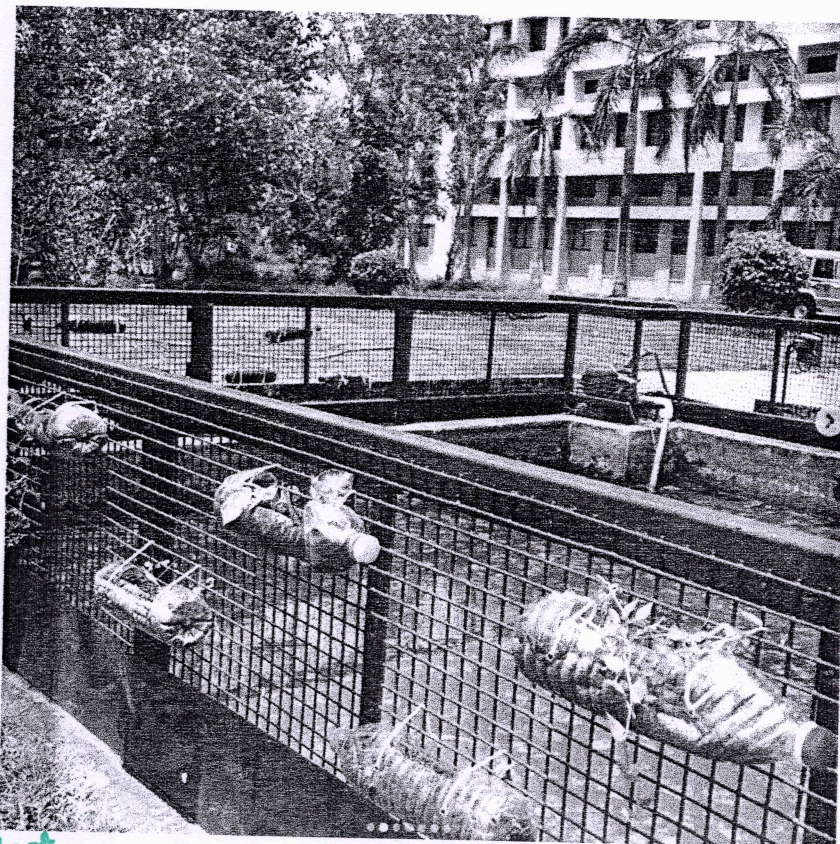
Leena

**Dr. LEENA A. V.
PRINCIPAL**

SREE NARAYANA GURU COLLEGE OF
ENGINEERING & TECHNOLOGY, PAYANUR
KANNUR

Past

PROGRAMME OFFICER
NATIONAL SERVICE SCHEME
UNIT No. 610
SREE NARAYANA GURU COLLEGE
OF ENGINEERING & TECHNOLOGY,
PAYANUR



Leena

Dr. LEENA A. V.
PRINCIPAL
 SREE NARAYANA GURU COLLEGE OF
 ENGINEERING & TECHNOLOGY, PAYYANUR
 KANNUR

Prasanth

PROGRAMME OFFICER
 NATIONAL SERVICE SCHEME
 UNIT No. 610
 SREE NARAYANA GURU COLLEGE
 OF ENGINEERING & TECHNOLOGY,
 PAYYANUR



Leena

Dr. LEENA A. V.
PRINCIPAL
SREE NARAYANA GURU COLLEGE OF
ENGINEERING & TECHNOLOGY, PAYYANUR
KANNUR

Prof.

PROGRAMME OFFICER
NATIONAL SERVICE SCHEME
UNIT No. 610
SREE NARAYANA GURU COLLEGE
OF ENGINEERING & TECHNOLOGY,
PAYYANUR



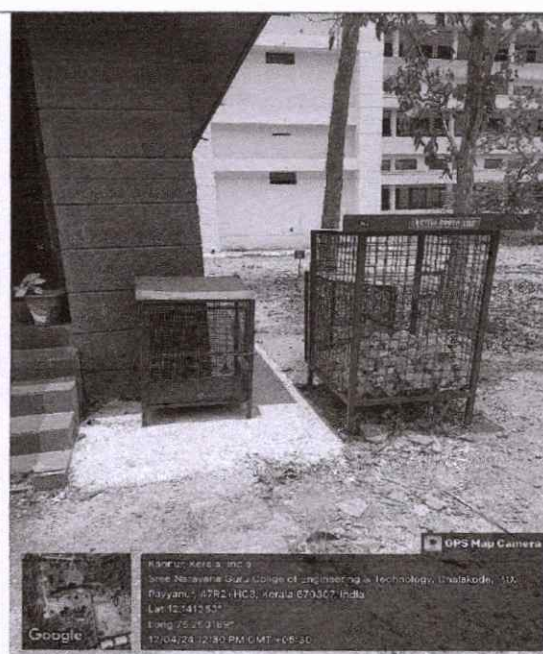
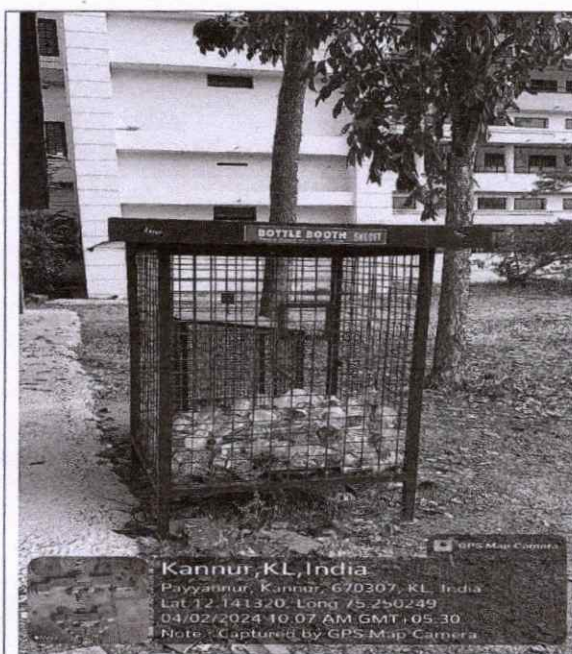
Sree Narayana Guru College of Engineering & Technology

CHALAKKODE P.O., KOROM, PAYYANUR, KANNUR-670 307



Green Campus Initiatives

By implementing a bottle booth initiative, the college actively engages the campus community in sustainable practices, reduces plastic pollution, and contributes to a cleaner and greener campus environment. By providing a designated location for students and staff to dispose of their plastic bottles, the initiative had encouraged in recycling. The college has sustainability goals aimed at reducing carbon footprint and promoting eco-friendly practices. A bottle booth aligns with these objectives by addressing waste management and resource conservation.

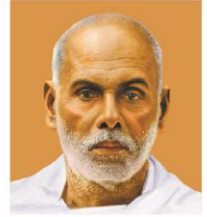



Dr. LEENA A V
PRINCIPAL
SREE NARAYANA GURU COLLEGE OF
ENGINEERING & TECHNOLOGY
PAYYANUR, KANNUR

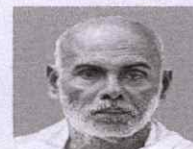


Sree Narayana Guru College of Engineering & Technology

CHALAKKODE P.O., KOROM, PAYYANUR, KANNUR-670 307



GEO TAGGED PHOTOS OF SOLAR POWER PLANTS



Geo Tagged Photos of Solar Power Plants



Solar energy: The college has installed solar panels on the rooftop of the administrative building to generate electricity from solar energy. The amount of electricity production is about 8 units per day. This can reduce energy bills. This can be particularly valuable during power outages in colleges with unreliable electricity supply. Solar panels contribute to reducing greenhouse gas emissions, thus promoting environmental sustainability and demonstrating an institution's commitment to renewable energy


Dr. LEENA A V
PRINCIPAL
SREE NARAYANA GURU COLLEGE OF
ENGINEERING & TECHNOLOGY
PAYYANUR, KANNUR

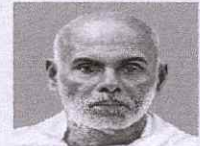


Sree Narayana Guru College of Engineering & Technology

CHALAKKODE P.O., KOROM, PAYYANUR, KANNUR-670 307

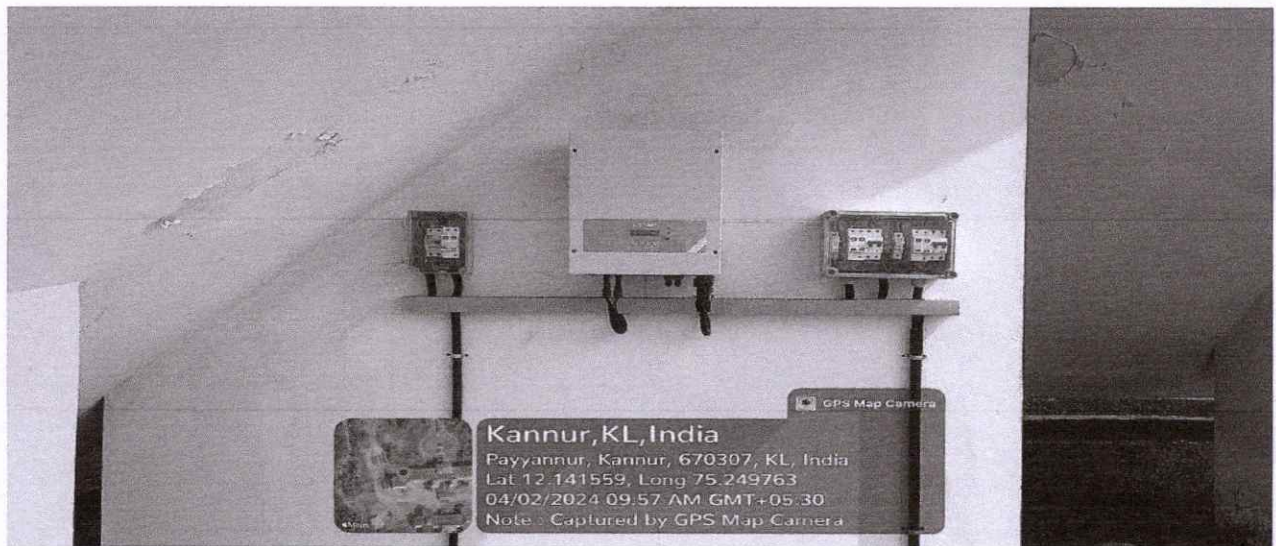


GEO TAGGED PHOTOS OF WHEELING TO THE GRID



Geo Tagged Photos of Wheeling to the Grid

Wheeling renewable energy can enhance energy security and resilience by diversifying energy sources and reducing dependence on centralized generation facilities.



Dr. LEENA A V
PRINCIPAL
SREE NARAYANA GURU COLLEGE OF
ENGINEERING & TECHNOLOGY
PAYYANUR, KANNUR



Sree Narayana Guru College of Engineering & Technology

CHALAKKODE P.O., KOROM, PAYYANUR, KANNUR-670 307



GEO TAGGED PHOTOS OF USE OF LED BULBS POWER EFFICIENT EQUIPMENT



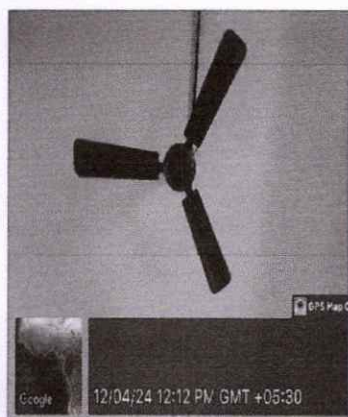
Sree Narayana Guru College of Engineering & Technology

CHALAKKODE P.O., KOROM, PAYYANUR, KANNUR-670 307



Geo-Tagged Photos of the Use of LED Bulbs /Power-Efficient Equipment

Implementing LED bulbs and other power-efficient equipment on the college campus has been significant in energy savings, cost reductions, and environmental benefits. The college has an LED manufacturing lab where cost-effective LED bulbs are manufactured. Other power-efficient equipment including BLDC fans and LED tubes are installed. By embracing energy-efficient technologies, colleges can lead by example and empower students to become advocates for environmental stewardship and energy conservation.




Dr. LEENA A V
PRINCIPAL
SREE NARAYANA GURU COLLEGE OF
ENGINEERING & TECHNOLOGY
PAYYANUR, KANNUR



Sree Narayana Guru College of Engineering & Technology

CHALAKKODE P.O., KOROM, PAYYANUR, KANNUR-670 307



GEO TAGGED PHOTOS OF BIOGAS PLANT



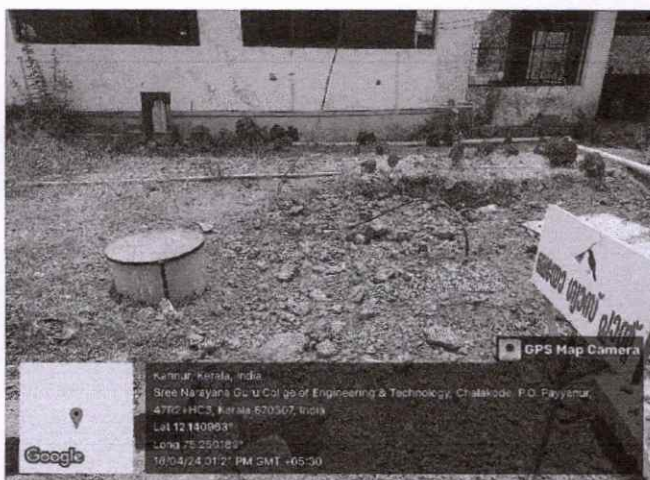
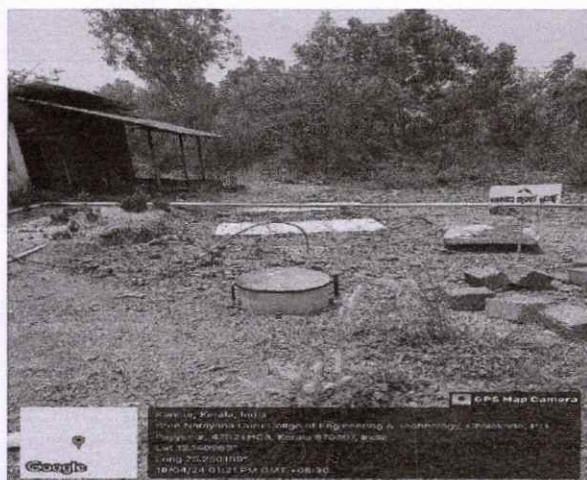
Sree Narayana Guru College of Engineering & Technology


CHALAKKODE P.O., KOROM, PAYYANUR, KANNUR-670 307



Geo Tagged photos of Biogas Plant

Our commitment to environmental responsibility is demonstrated through initiatives like our biogas plant. Efficiently manage organic waste generated on campus, including food waste from canteen. Infrastructure to utilize biogas are present for and biogas is mainly used for cooking. By converting organic waste into energy, we are not only reducing our carbon footprint but also inspiring the next generation. This initiative underscores our commitment to creating a greener, more sustainable future for our campus community and beyond.




Dr. LEENA A V
PRINCIPAL
SREE NARAYANA GURU COLLEGE OF
ENGINEERING & TECHNOLOGY
PAYYANUR, KANNUR



Sree Narayana Guru College of Engineering & Technology

CHALAKKODE P.O., KOROM, PAYYANUR, KANNUR-670 307



GEO TAGGED PHOTOS OF INCINERATOR



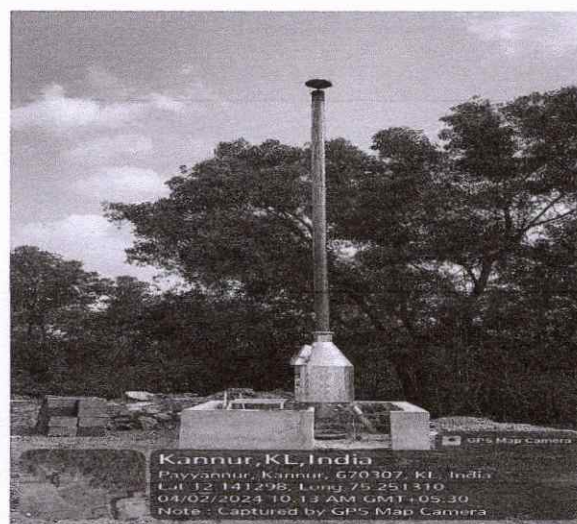
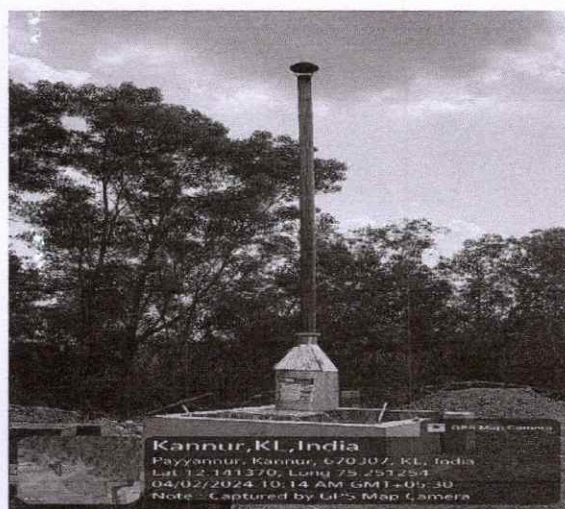
Sree Narayana Guru College of Engineering & Technology

CHALAKKODE P.O., KOROM, PAYYANUR, KANNUR-670 307



.Geo Tagged Photos of Incinerator

Implementing an incinerator in a college campus can be a significant step towards efficient waste management and sustainability. Incinerators have been used for efficiently burning solid waste, reducing its volume by up to 90%, this has helped college manage waste more effectively and minimize the need for landfill space. The incinerator has been installed with advanced incinerator technologies for minimizing air pollution. Most of waste including waste from college, canteen have been disposed through this methods




Dr. LEENA A V
PRINCIPAL
SREE NARAYANA GURU COLLEGE OF
ENGINEERING & TECHNOLOGY
PAYYANUR, KANNUR



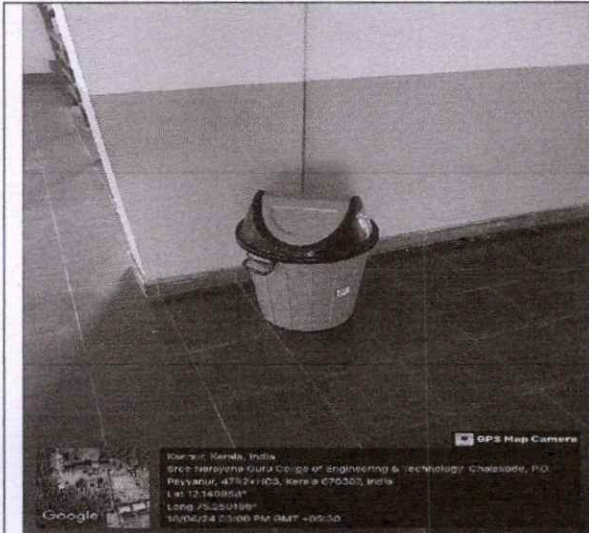
Sree Narayana Guru College of Engineering & Technology

CHALAKKODE P.O., KOROM, PAYYANUR, KANNUR-670 307

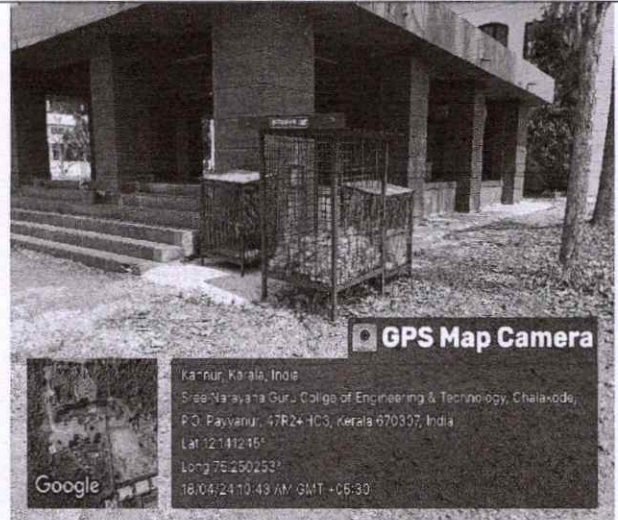


GEO TAGGED PHOTOS OF SOLID WASTE MANAGEMENT

Geo Tagged Photos of Solid Waste Management



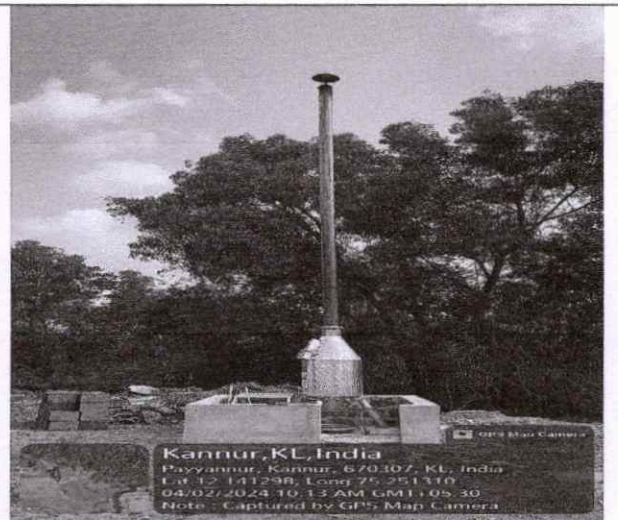
Organic waste



Bottle waste



Office waste



disposal

Our solid waste management efforts have resulted in measurable impacts:

- Reduction in total waste sent to landfills since the implementation of the program.
- Increased recycling rates, with large amount of recyclables collected annually.
- Improved cleanliness and hygiene across the campus

Leena
Dr. LEENA A V
PRINCIPAL
SREE NARAYANA GURU COLLEGE OF
ENGINEERING & TECHNOLOGY
PAYYANUR, KANNUR



Sree Narayana Guru College of Engineering & Technology

CHALAKKODE P.O., KOROM, PAYYANUR, KANNUR-670 307

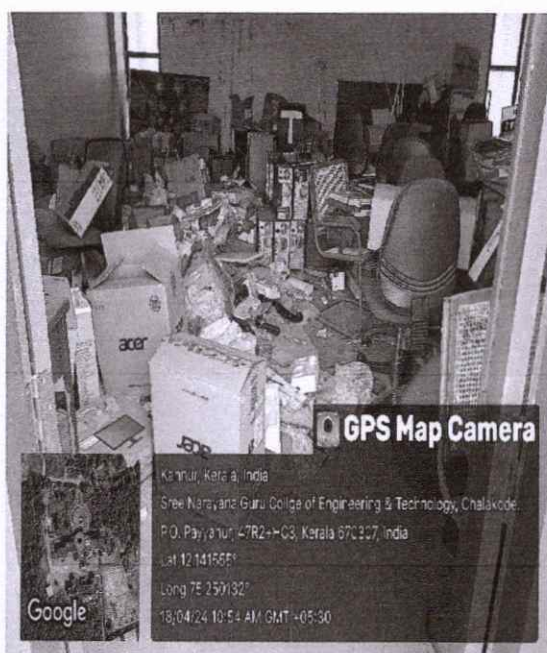
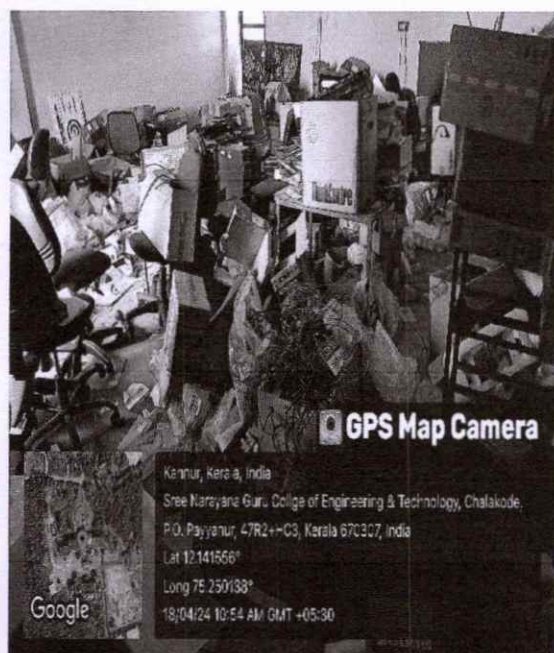


GEO TAGGED PHOTOS OF E-WASTE MANAGEMENT



Geo Tagged Photos of E-Waste Management

Electronic waste (e-waste) includes discarded electronic devices such as computers, laptops, smartphones, printers, and other electronic equipment that can pose environmental and health risks if not managed properly. We have established designated room where the waste are stored

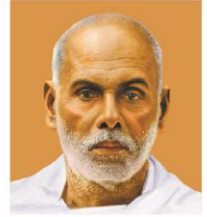


Leena
Dr. LEENA A V
PRINCIPAL
SREE NARAYANA GURU COLLEGE OF
ENGINEERING & TECHNOLOGY
PAYYANUR, KANNUR



Sree Narayana Guru College of Engineering & Technology

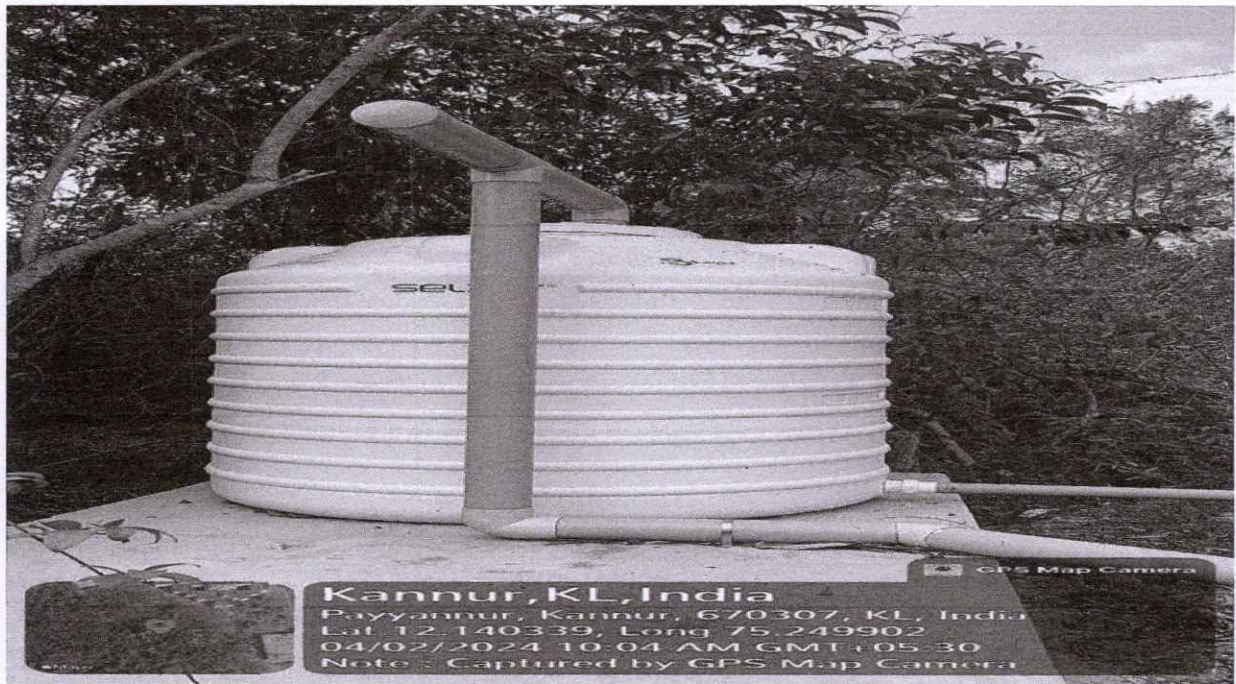
CHALAKKODE P.O., KOROM, PAYYANUR, KANNUR-670 307



GEO TAGGED PHOTOS OF RAIN WATER HARVESTING

Geo Tagged Photos of Rain Water Harvesting

Implementing rainwater harvesting on a college campus is been highly effective. Infrastructure for rainwater harvesting collection such as filters, storage tanks, and distribution systems have been made for college-specific needs harvested rainwater is used for irrigation, maintaining green spaces, and landscaping.



Leena
Dr. LEENA A V
PRINCIPAL
SREE NARAYANA GURU COLLEGE OF
ENGINEERING & TECHNOLOGY
PAYYANUR, KANNUR



Sree Narayana Guru College of Engineering & Technology

CHALAKKODE P.O., KOROM, PAYYANUR, KANNUR-670 307

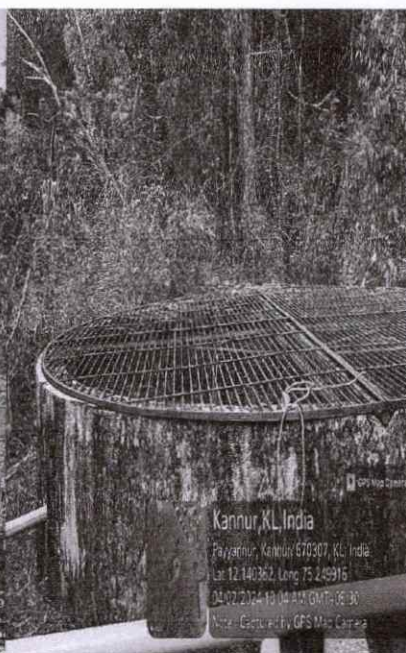


**GEO TAGGED PHOTOS OF BOREWELL/OPEN WELL
RECHARGE**



Geo Tagged Photos of Borewell/Open Well Recharge

Open wells have been used for gardening, irrigation, and other purposes. Borewell can provide a reliable source of water throughout the year, mainly during summer. In our colleges, borewells are often drilled to ensure a sustainable and reliable water supply, especially during dry seasons or in areas where surface water sources may be insufficient. The quality of water of open wells are maintained by providing covering over surface. For Borewell regular maintenance is done.



Leena
Dr. LEENA A V
PRINCIPAL
SREE NARAYANA GURU COLLEGE OF
ENGINEERING & TECHNOLOGY
PAYYANUR, KANNUR



Sree Narayana Guru College of Engineering & Technology

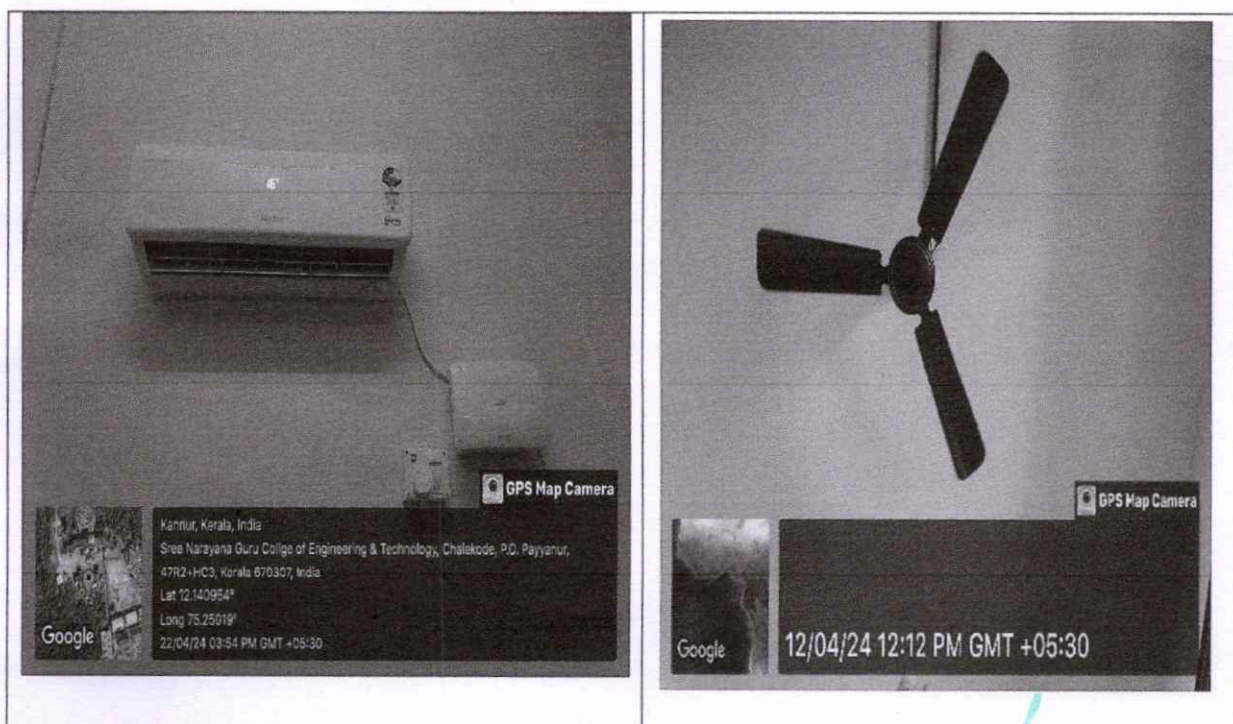
CHALAKKODE P.O., KOROM, PAYYANUR, KANNUR-670 307



GEO TAGGED PHOTOS OF STAR AC AND BLDC FAN

.Geo Tagged Photos of star A/C and BLDC fan

Star-rated ACs have higher EER values, indicating greater cooling capacity per unit of electricity consumed. This means they can effectively cool spaces while using less energy. Lowers the electricity consumption, by reducing operational expenses Utilize inverter technology this results in precise temperature control and reduced energy wastage compared to non-inverter models. At our college, we are committed to adopting sustainable and innovative technologies to minimize our environmental impact and optimize energy usage. One such initiative involves the installation of BLDC (Brushless DC) fans throughout our campus facilities. BLDC fans represent a significant advancement in fan technology, offering superior performance and energy efficiency compared to traditional AC fans.

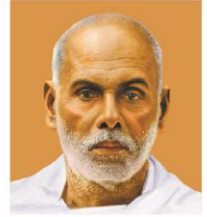


Leena
Dr. LEENA A V
PRINCIPAL
SREE NARAYANA GURU COLLEGE OF
ENGINEERING & TECHNOLOGY
PAYYANUR, KANNUR



Sree Narayana Guru College of Engineering & Technology

CHALAKKODE P.O., KOROM, PAYYANUR, KANNUR-670 307



GEO TAGGED PHOTOS OF DISABLED FRIENDLY PATHWAYS -RAMPS

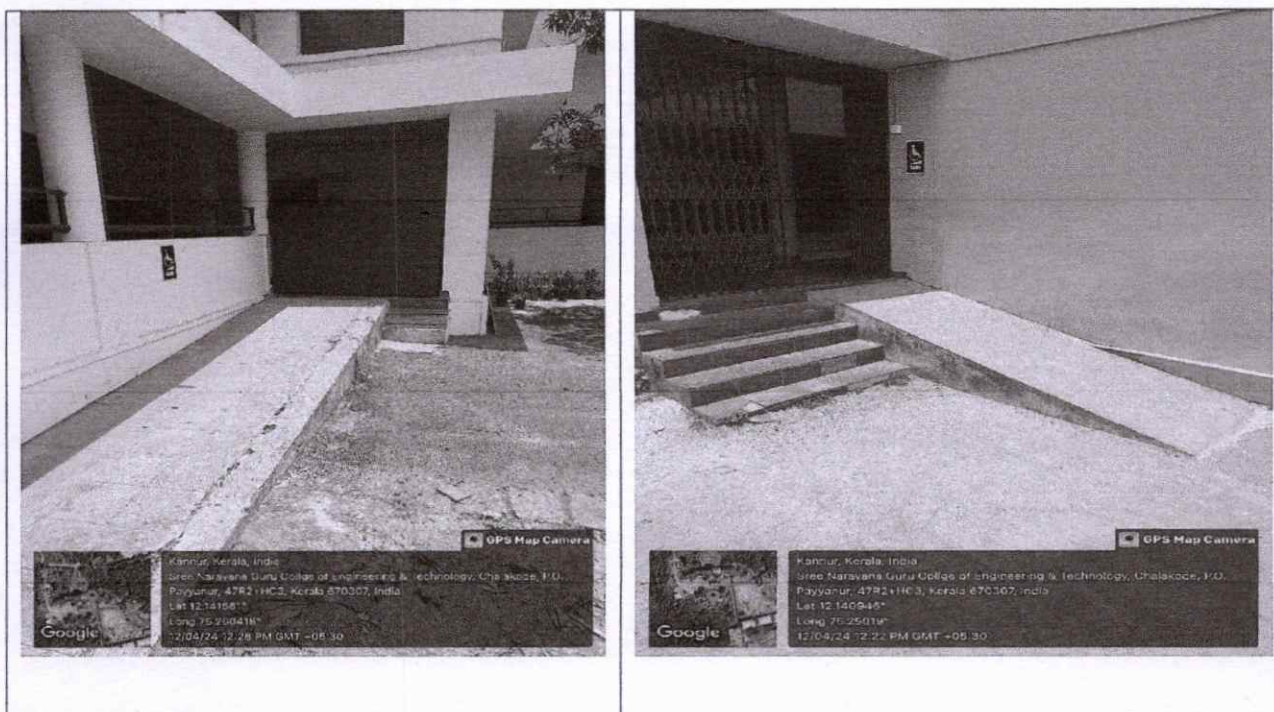


Sree Narayana Guru College of Engineering & Technology

CHALAKKODE P.O., KOROM, PAYYANUR, KANNUR-670 307



Disabled Friendly Pathways-Ramps



The primary advantage of installing disabled-friendly pathways and ramps is ensuring that all individuals, including those with disabilities, can navigate the campus safely and independently. The campus has accessible pathways for the disabled. There are ramps for entry to each academic block. This includes smooth, well-maintained ramps with appropriate slopes to facilitate easy movement between buildings, labs, hostels, and toilets.

Dr. LEENA A V
PRINCIPAL
SREE NARAYANA GURU COLLEGE OF
ENGINEERING & TECHNOLOGY
PAYYANUR, KANNUR



Sree Narayana Guru College of Engineering & Technology

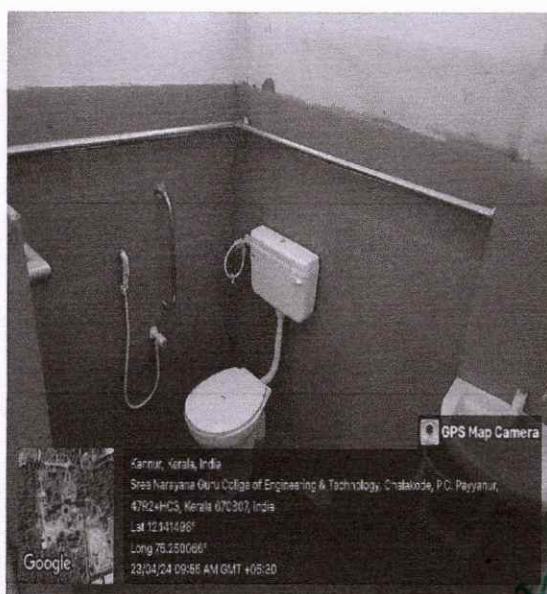
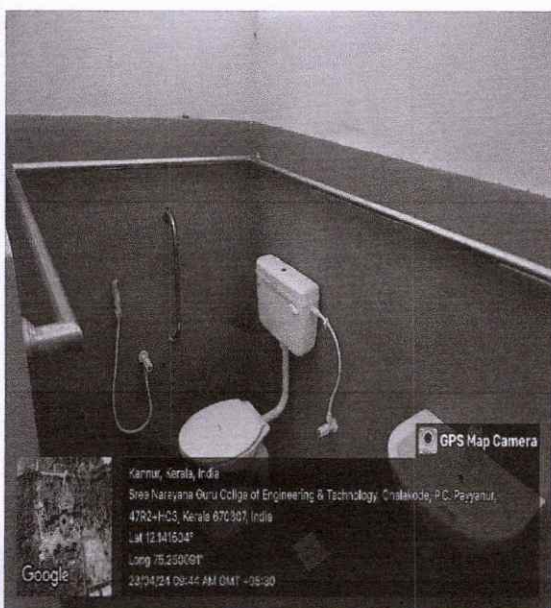
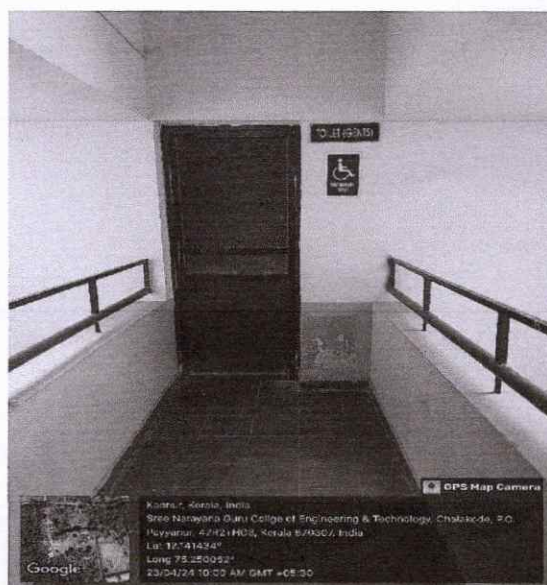
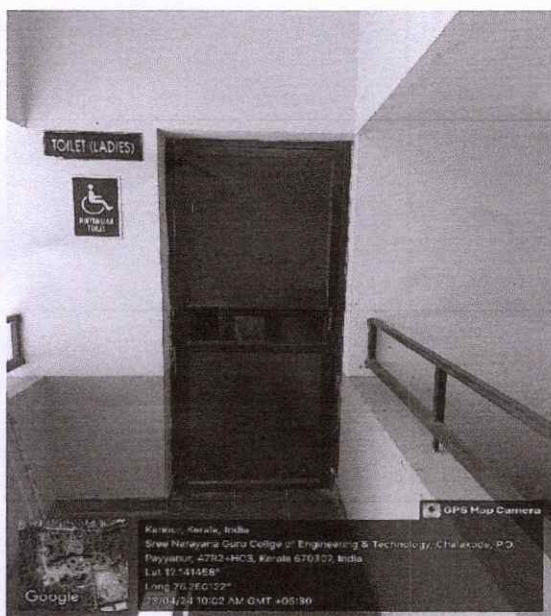
CHALAKKODE P.O., KOROM, PAYYANUR, KANNUR-670 307



GEO TAGGED PHOTOS OF DISABLED FRIENDLY WASHROOM

14. Disabled Friendly Washrooms

By investing in disabled-friendly washrooms, our college demonstrates its commitment to accessibility, social responsibility, and creating a supportive environment for everyone, will continue to improve the accessibility of our campus facilities, disabled friendly washrooms is one of them.



Leena
Dr. LEENA A V
PRINCIPAL
SREE NARAYANA GURU COLLEGE OF
ENGINEERING & TECHNOLOGY
PAYYANUR, KANNUR



Sree Narayana Guru College of Engineering & Technology

CHALAKKODE P.O., KOROM, PAYYANUR, KANNUR-670 307

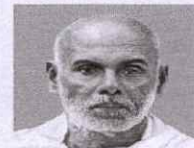


GEO TAGGED PHOTOS OF WHEELCHAIR



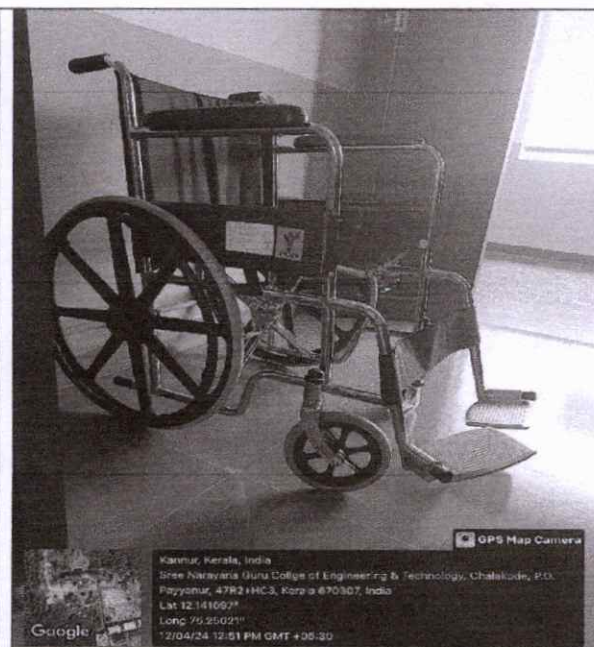
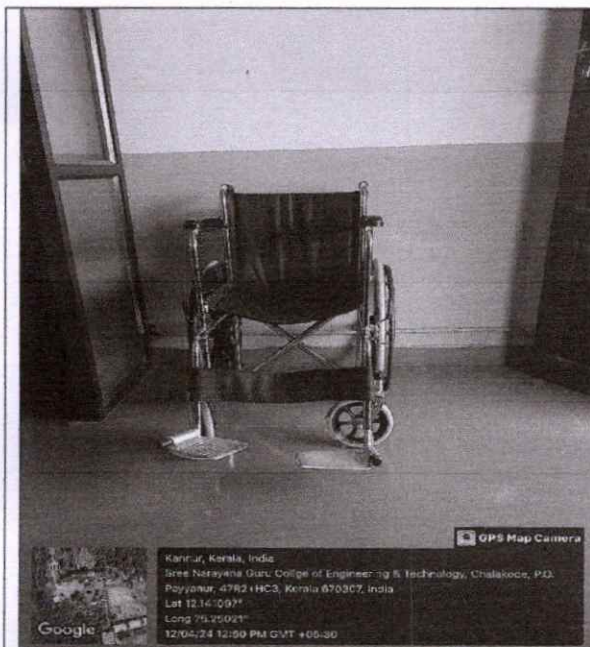
Sree Narayana Guru College of Engineering & Technology

CHALAKKODE P.O., KOROM, PAYYANUR, KANNUR-670 307



Wheelchair

Campuses have accessible pathways that accommodate wheelchairs. Accessible parking spaces should be available in academic buildings and other facilities.




Dr. LEENA A V
PRINCIPAL
SREE NARAYANA GURU COLLEGE OF
ENGINEERING & TECHNOLOGY
PAYYANUR, KANNUR